

Thea Kano  
Artistic Director

Justin Fyala  
Executive Director



# BRAND NEW DAY



**MARCH 12, 2022  
LINCOLN THEATRE**

# Hitting the right notes in real estate



David Shotwell, your  
trusted real estate advisor

**BEST**  
WASHINGTONIAN  
**2021**

Realtor® DC/MD/VA  
david@davidshotwell.com  
202.297.4094

 David Shotwell

Compass is a licensed real estate brokerage that abides by Equal Housing Opportunity laws. Information is compiled from sources deemed reliable but is not guaranteed. Compass is licensed as Compass Real Estate in DC and as Compass in Virginia and Maryland. 1313 14th Street NW, Washington, DC 20005 | 202.386.6330

COMPASS



**Welcome to a BRAND NEW DAY!**

*"The ones who came before you  
The others yet to come  
And those who you will teach it to  
And those you learned it from"*

Inspired by the lyrics from the song "The Human Heart" from Broadway's *Once On This Island*, our show *Brand New Day* explores stories establishing acceptance and love from our chosen families and our chosen homes. The notion that we dream our dreams, we choose our home, we chose our family, and we are part of the human heart is brought to life with through this show's songs and stories.

MCMW is committed to telling stories through song and dance. We tell the stories of those who came before us, and we tell stories of our dreams for the next generation. That next generation is represented in our GenOUT Youth Chorus, a thriving community of young LGBTQ+ and allied individuals committed to raising their voice for equality. Thanks to you, our incredible supporters, the GenOUT Youth Chorus is growing and flourishing, learning to have these conversations, to make new connections, and to establish acceptance and love within the community.

Every day is a brand new day with possibilities for new conversations, new connections, and dreams realized. We are living through challenging times, but each day is a step toward a world of love and acceptance.

You are OUR chosen family. Thank you for celebrating a *Brand New Day* with us!



**Thea Kano**  
Artistic Director



**Justin Fyala**  
Executive Director

**welcome**





# VACAYA



VACAYA's full-ship and full-resort vacations are built for the entire **LGBTQIAPK** community, so you have the freedom to express your individuality, make personal connections, celebrate life, rev up, or simply relax... **together.**

## BLISS

BIG-SHIP CRUISES



Our big-ship cruises offer a welcoming judgment-free environment, all-star entertainment, mind-blowing parties, and non-stop fun.

**Joyful. Spontaneous. Celebratory.**

## OASIS

RESORT VACATIONS



Built for fun, relaxation, adventure, and romance, our most laid-back holidays feature irresistible all-inclusive resorts in the world's best destinations.

**Easy. Indulgent. Unscripted.**

## LUXE

SMALL-SHIP CRUISES



Our discovery voyages immerse you in the authentic flavors of the world's most exciting popular & off-the-beaten-path destinations all in first-class style & luxury.

**Refined. Exotic. Treasured.**

Book Online 24x7 @ [myVACAYA.com](http://myVACAYA.com)

**THEA KANO**  
**ARTISTIC DIRECTOR**

**JUSTIN FYALA**  
**EXECUTIVE DIRECTOR**

# BRAND NEW DAY

**ASSOCIATE CONDUCTOR/  
GENOUT CHORUS DIRECTOR**  
C. PAUL HEINS

**ASSISTANT CONDUCTOR/  
SEASONS OF LOVE DIRECTOR**  
JOSHUA SOMMERVILLE

**STAGE DIRECTOR**  
SOLOMON  
HAILESELASSIE

**PRODUCTION MANAGER**  
CHIPPER DEAN

**CHOREOGRAPHERS**  
CRAIG CIPOLLINI &  
JAMES ELLZY

**DANCE CAPTAIN**  
JAMES ELLZY

**ASSOCIATE PRODUCTION MANAGER**  
MARK KLEIN

**COSTUME DESIGN**  
JEFFREY HOLLANDS

**17TH STREET DANCE DIRECTOR**  
CRAIG CIPOLLINI

**LIGHTING DESIGN**  
SOLOMON  
HAILESELASSIE

**TECHNICAL DIRECTOR**  
JARROD BENNETT

**SOUND DESIGN**  
MARK KLEIN

**PROPS MASTER**  
JOHN GOODRICH

**SET DESIGN**  
BERNARD VICARY

## INSTRUMENTALISTS

**PIANO**  
THEODORE  
GUERRANT

**BASS**  
SHAWN  
ALGER

**PERCUSSION**  
KEITH  
BUTLER

**KEYBOARD**  
RAYMOND  
RINALDO

# MUSICAL NUMBERS

## BRAND NEW DAY

Thea Kano, Conductor  
C. Paul Heins, Associate Conductor  
Joshua Sommerville, Assistant Conductor

**GAY MEN'S CHORUS OF WASHINGTON, DC, GENOUT YOUTH CHORUS,  
AND 17TH STREET DANCE**

Human Heart.....Music by Stephen Flaherty  
From *Once on This Island* Lyrics by Lynn Ahrens  
Soloist: Paul Negron

**GAY MEN'S CHORUS OF WASHINGTON, DC AND GENOUT YOUTH CHORUS**

Chosen Family.....Music and Lyrics by Rina Sawayama,  
Soloists: Alex Dy Cruz, Paul Negron Danny Harle, and  
Jonny Latimer  
Arranged by Raymond Rinaldo

**GENOUT YOUTH CHORUS**

Reflection.....Music by Matthew Wilder  
From *Mulan* Lyrics by David Zippel  
Arranged by Mac Huff

Speakers: Justin Fyala and Thea Kano

**ROCK CREEK SINGERS**

We Are.....Music by Bob Chilcott  
Text by Maya Angelou  
Would You Harbor Me?.....Ysaÿe M. Barnwell

**GAY MEN'S CHORUS OF WASHINGTON, DC**

Speaker: Jay Gilliam

(VIDEO) Heavy.....Music by Steve Milloy  
Text by McKenzie Coleman

Speaker: Linthicum-Blackhorse

Wakantanhan Hotanin'pe.....Traditional Lakota Sioux  
Soloist: Linthicum-Blackhorse American Indian Spiritual  
Flute: C. Paul Heins Arranged by Linthicum-Blackhorse

**POTOMAC FEVER**

Speaker: Shawn Morris

Creep.....Music and Lyrics by Albert Hammond,  
Mike Hazelwood, Thomas Yorke,  
Jonathan Greenwood, Colin Greenwood,  
Edward O'Brien, and Philip Selway  
Arranged by Walter Chase and Dan Ponce  
Perfect/Just the Way You Are.....Words and Music by Alecia Moore,  
Soloists: Matt Holland and Cooper Westbrook Max Martin and  
Shellback (Perfect);  
Ari Levine, Khalil Walton, Bruno Mars,  
Peter Gene Hernandez,  
Philip Lawrence and Khari Cain  
(Just the Way You Are)

**GAY MEN'S CHORUS OF WASHINGTON, DC**

Speaker: Sam Lee

Arirang.....Korean Folk Song  
Arranged by Lon Beery

My Dogs.....William Finn

from *Elegies*  
Soloist: John Knapp

Speaker: Ellery Rhodes

Luz y Sombra.....Music by Jorge Cózatl

Soloists: Edgár Farfan,  
Jahdiel Torres-Cabá

Text by Manuel Gutiérrez Nájera

Speaker: Michael Dumlao

The Harbor.....Music by Brian A. Foy

Text by Emma Lazarus

Speaker: Jack Reiffer

Home.....Charlie Smalls

From *The Wiz*

### SEASONS OF LOVE

Rain Medley

Soloists: Cole Jaconski, Gabriel Lopez, Thomas Reiker, Ellery Rhodes

Through the Fire.....Music and Lyrics by  
David Foster, Tom Keane,  
and Cynthia Weil

Bridge Over Troubled Water.....Music and Lyrics by Paul Simon

Purple Rain.....Music and Lyrics by Prince  
Arranged by Joshua Sommerville

### GAY MEN'S CHORUS OF WASHINGTON, DC, SEASONS OF LOVE, AND

#### 17TH STREET DANCE

A Brand New Day (Everybody Rejoice).....Music and Lyrics by Luther Vandross

From *The Wiz*

Arranged by Joshua Sommerville

Soloists: Brent Almond, Cole Jaconski,  
Gabriel Lopez, Thomas Reiker, Ellery Rhodes, Micah Yarbrough

### HUMAN FAMILY

Poem by Maya Angelou

I note the obvious differences in the human family.

Some of us are serious, some thrive on comedy.

Some declare their lives are lived as true profundity,

And others claim they really live the real reality.

The variety of our skin tones can confuse, bemuse, delight,  
Brown and pink and beige and purple, tan and blue and white.  
I've sailed upon the seven seas and stopped in every land,  
I've seen the wonders of the world not yet one common man.  
I know ten thousand women called Jane and Mary Jane,  
But I've not seen any two who really were the same.

Mirror twins are different although their features jibe,

And lovers think quite different thoughts

While lying side by side.

We love and lose in China, we weep on England's moors,

And laugh and moan in Guinea, and thrive on Spanish shores.

We seek success in Finland, are born and die in Maine.

In minor ways we differ, in major we're the same.

I note the obvious differences between each sort and type,

But we are more alike, my friends, than we are unlike.

We are more alike, my friends, than we are unlike.

We are more alike, my friends, than we are unlike.

# GMCW ENSEMBLES

## Potomac Fever

Mike Allen  
Peter Cheney  
Jake Cundiff  
Jay Gilliam  
Jim Gruschus  
Gibson Haynes

Matt Holland  
Abel Jimenez  
Shawn Morris  
Paul Negron  
Paul NicholSEN  
Michael B. Smith

Jeb Stenhouse  
Kevin Sweitzer  
Kevin Thomason  
David Treacher  
Cooper Westbrook

## Rock Creek Singers

Michael Aylward  
Zac Barger  
Billy Barry  
Eric Belkengren  
Jarrod Bennett  
Rick Bennett  
Jonathan Chaffin  
Ethan Chiang  
André Cotten  
Giancarlo D'Elia  
Bob Dragoset  
Rob Finn

Rob Hall  
Ben Harris  
Mark Hegedus  
Michael Hughes  
Henry Johnson  
John Jowers  
Paul Kelsch  
Jim Madigan  
Joal Martin  
Kevin Morris  
Javon Morris-Byam

James Murphy  
Patrick Nelson  
Josh Peterson  
Larry Poole  
Jack Reiffer  
Raymond Rinaldo  
Sean Robinson  
Craig Ruskin  
Lonny Smith  
Jason Suggs  
James Turner

## Seasons of Love

Tommie Adams, Jr.  
Brent Almond  
Ben Aparicio-Coto  
Marcus Brown  
Johel Brown-Grant  
Xitlali Dobbs  
Michael Dumlaio  
James Frisby  
Cliff Gilbert  
Adrian Gillem  
Hunter Jackson  
Cole Jaconski

Joseph Jozlin  
Ezra Kottler  
Joseph Levin-Manning  
Gabriel Lopez  
Don Medor  
Kerry Neal  
Jack Newman  
Neil Offner  
Elishua Perez  
Alexis Rangel  
Mikal Rasheed

Thomas Reiker  
Ellery Rhodes  
Calvin Robinson  
Jamel Sazuete-Jones  
Lamar Smith  
Conrad Sylvanus  
Matthew Teubert  
Santos Torres  
Jahdiel Torres Cabá  
Ray Yankey  
Micah Yarbrough

## 17th Street Dance

Danny Aldous  
Carlos Barillo  
Sean Cator  
Craig Cipollini

Iván Dávila  
James Ellzy  
Jeffrey Hollands  
Cole Jaconski

Michael McGovern  
Darryl Pilate  
Brandon Steele  
Matt Williamson

## GenOUT Youth Chorus

Maysie Bedsole  
Caleb Cain  
Lilly Caldwell  
Carys Clayton  
Hannah Clopper  
Maddy Dean  
Adam Downey  
Elliot Eiseman

Tina Gessesse  
Liam Grochowski  
Tory Kidwell \*  
Parker Klym  
Claire Lynch  
Zayden McDaniel  
Anjali Murthy  
Emory Neuman \*

Lucas Olivo  
August Rowe \*  
Emma Schmiedigen  
Jay Schwartz-Stanton \*  
Ryan Swayze \*  
Elena Vol \*  
Charlie White

\* Student Leader





Potomac Fever



Rock Creek Singers



Seasons of Love



17th Street Dance



GenOUT Youth Chorus  
All photos by Pradipta Banerjee

# SPECIAL GUEST



## **Linthicum-Blackhorse, DMA (Wathánka Šúnkawak̓hansápa)**

Dr. Blackhorse is an American Indian (Sioux & Apache) Pipe-carrier in the traditional spirituality of the *Lakhóta* Sioux of South Dakota, United States of America. As a *Lakhóta* Pipe-carrier, he has spent years participating in ceremony and spiritual education with a desire to provide factual and honest information to the public. Dr. Blackhorse learned from prominent chiefs and medicine men, *wicháša-wákhanj*, like Albert White Hat Sr., *Sičhángŭ Lakhóta*, among other spiritual leaders.

Dr. Blackhorse began composing on his own at the age of 12. His music studies began in the piano studio of Mary Ann LaCour in Katy, TX at the age of 14. He attended Cinco Ranch High School in Katy, TX and studied choir, musical theater, and dance. In 2005 he was awarded the Eagle Scout Award from the Boy Scouts of America. He

graduated with honors in 2007 and began attending Baylor University to study aerospace science. In 2013 he began attending McLennan College in Waco, TX to earn prerequisites for a bachelor's degree in music, however in 2014 he was accepted into a Master of Music program for composition at Texas Tech University. He completed his master's degree in 2016 and his Doctor of Musical Arts in 2019 concluding with his capstone musical drama *The Raven*, performed jointly by Moonlight Musicals Company and TTU Opera.

Dr. Blackhorse has been actively commissioned, writing music for ensembles and performers including the South Dakota State University Wind Symphony, San Antonio Chamber Choir, Delaware Choral Academy, National Flute Association Diversity Committee, Texas Tech University Orchestras, South Plains College Choirs, and Fulbright flutist Tammy Yonce.

Currently he is a freelance composer in the United States. For more information about Dr. Blackhorse, visit [LinthicumBlackhorse.com](http://LinthicumBlackhorse.com)

# SUPPORT

Below is a list of organizations that directly benefit Native Americans. We hope that you will show your support by donating to any or all of these organizations.

### **American Indian College Fund**

The nation's largest and highest-rated American Indian nonprofit organization changing the face of higher education today. Their purpose is to increase the number of American Indians with college degrees.

[collegefund.org](http://collegefund.org)

### **American Indian Higher Education Consortium**

A consortium of the 37 Tribal Colleges and Universities (TCUs) in the US that works to influence policy and build programs in all facets of higher education. They provide technical assistance in key areas, networking, communication assistance with federal agencies, and plan initiatives to address areas of need.

[aihec.org](http://aihec.org)

### **National Indian Child Care Association**

An association developed in 1993 to provide information, support, coordination, and advocacy for Tribal child care. They focus on promoting high quality culturally-relevant child care and development and to unify tribes and tribal organizations.

[nicca.us](http://nicca.us)

### **Center for Native American Youth (at the Aspen Institute)**

A national education and advocacy organization that works alongside Native youth, ages 24 and under, on reservations, in rural villages, and urban spaces across the country to improve their health, safety, and overall well-being.

[cnay.org](http://cnay.org)

## LUZ Y SOMBRA

Translated from Spanish

I am the errant bird,  
I am the black night,  
I am the humble flower  
And the aching heart.

I am the errant bird that sobs alone,  
And is always crossing arid deserts;  
So you must be the benevolent green branch that offers  
Sweet solace to the bird that is already dying.

I am the black night, without lights, without stars;  
I am the heaven of shadows, of roaring tempests;  
So you must be the chaste Moon who with her lovely light  
Dissipates the horrible darkness of that night.

I am the humble flower possessing neither beauty nor festive attire,  
Possessing neither placid colors nor inebriating fragrance;  
You, the pallid lily of Acolian purity  
Whose chaste perfume is the breath of love,

But if the humble flower loved the lily,  
And thankfully saw its passion rewarded,  
It might lift up its corolla, full perhaps of sweet aroma,  
Its stem forever straightened by the breath of love.

My life is a sigh, your life a smile;  
You must be, my love, the north star that guides my ambition,  
You are the brook and bird, you are perfume and zephyr,  
The loveliest laurel that the heart desires.

## WAKANTANHAN HOTANIN'PE

Translation from Siouxan to English provided by the composer

My sacred brother is making himself heard  
The Thunderbird Nation is flying  
Making their voices heard.

## ARIRANG

Translated from Korean

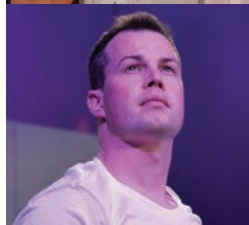
Arirang, Arirang, Arariyo  
You are going over Arirang Pass.

The one who leaves me,  
I shall not walk before his feet go sore.

Just as there are many stars in the clear sky,  
There are also many dreams in our heart.

There, over there, that mountain is the Baekdusan Mountain,  
Where even in the middle of winter days, flowers bloom.

Arirang, Arirang Arariyo,  
You are going over Arirang Pass.





# WHO'S WHO



## **Thea Kano, Artistic Director**

Dr. Thea Kano, a Northern California native, became active in the arts at an early age. She started playing piano at age four and began taking ballet soon after, a background that has a strong influence on her conducting. Dr. Kano's graceful yet commanding presence on stage and the robust performances she obtains from her musicians have basis in her formal training as a dancer.

Dr. Kano has conducted an extensive range of repertoire with several ensembles, including the Angeles Chorale, The Washington Chorus, and in 2014 assumed the position of artistic director of the Gay Men's Chorus of Washington, DC, for which she also directs its acclaimed ensembles Rock Creek Singers and Potomac Fever. In addition, she oversees GMCW's outreach efforts, including its GenOUT program. A champion of music education, Dr. Kano has devoted countless hours

to students of all ages and backgrounds. She believes in the power of music to nurture and believes that classical music should be accessible to all. Dr. Kano's substantial experience in this arena includes: building partnerships with organizations serving disenfranchised adults, hosting workshops with at-risk youth, leading youth arts programs of many sizes, as well as directing award-winning high school and collegiate choruses.

In addition to her work with GMCW, Dr. Kano founded the New York City Master Chorale in 2005 and served as the artistic director until spring 2019. The 80-member group is recognized as one of the finest vocal ensembles in New York City and has performed to sold-out audiences on two continents. Dr. Kano is known for her expressiveness and dynamic conducting, and the Chorale has been praised for its balance and richness in tone in performing a variety of musical styles. Under her direction, the Chorale made its debuts at Lincoln Center (2006) and Carnegie Hall (2009), as well as its international debut in Paris, France (2011).

Dr. Kano has prepared choruses for Zubin Mehta, Esa-Pekka Solonen, Emil de Cou, David Hayes, Craig Fleischer, Victor Vener, and Paul Salamunovich. Dr. Kano's various ensembles have performed at the Kennedy Center, Lincoln Center, Carnegie Hall, St. Patrick's Cathedral, Disney Hall, Église Saint-Sulpice (Paris), and on the National Mall for the 2009 inaugural ceremonies.

Dr. Kano received her doctorate in choral conducting from the University of California, Los Angeles in 2004. At UCLA, Dr. Kano studied under Donald Neuen, her professional mentor. For her dissertation on Duruflé's *Requiem*, Dr. Kano completed research with L'Association Duruflé in Paris and studied privately with Paul Salamunovich. Dr. Kano holds a Master of Music degree from UCLA and a bachelor's degree in choral music education and piano performance from Arizona State University. Dr. Kano speaks French and actively conducts ensembles in New York City, Paris, and Washington, DC.





### **C. Paul Heins, Associate Conductor**

C. Paul Heins joined the GMCW artistic team as associate conductor in the 2014 – 2015 season. Dr. Heins's principal role with GMCW is directing the GenOUT Youth Chorus, an outreach ensemble for LGBTQ+ and allied youth founded in 2015. Under Dr. Heins's leadership, GenOUT has grown from its inaugural class of nine singers to a current enrollment of 23 singers representing more than two dozen schools in DC, Maryland, and Virginia. Over the past six years, more than 120 students from over 60 schools have participated in GenOUT Youth Chorus and camps, and notable performance venues have included the Kennedy Center, the Library of Congress, the Washington National Cathedral, and the White House for President Obama. In addition to its regular performances with GMCW, GenOUT's collaborations have included Nashville's Major Minors, The Musicianship's Washington Youth Chorus, The Washington Chorus, NYC's Youth Pride Chorus, and the Children's Chorus of Washington.

Dr. Heins's previous appointments include Georgetown University (Concert Choir director), the Lesbian & Gay Chorus of Washington (director), the Washington Master Chorale (assistant director), Washington Men's Camerata (accompanist/associate conductor), and the College of William & Mary (interim choir director). He was musical director for three GMCW musicals (*Ruthless*, *When Pigs Fly*, and *You're a Good Man, Charlie Brown*.) Dr. Heins is a frequent guest pianist, flutist, and conductor in the DC area. He was trained in piano and flute at Bowling Green State University (B.Mus.), flute at the University of Maryland (M.Mus.), and choral conducting at the University of Maryland (D.M.A.). His principal teachers have been Edward Maclary, Patrick Walders, and Mark S. Kelly (conducting); William Montgomery and Judith Bentley (flute); and Virginia Marks and Victoria Harris (piano). His doctoral work centered around Lukas Foss's cantata, *The Prairie*. Dr. Heins has presented at conferences of the American Choral Directors Association and Chorus America, and has served as guest clinician for DCPS music festivals and teacher workshops.



### **Joshua Sommerville, Assistant Conductor**

A native of Gaithersburg, MD, Joshua Sommerville is a singer, pianist, music director, and composer who graduated from Towson University with a Bachelor of Science in Music. Joshua started his music journey at the age of five cultivating his skills at the piano. He often states, "If it weren't for my father, who taught me the only song he knew on the piano, my first piano teacher who taught me how to read music, and my mother, who refused to let me quit playing piano, I would not be where I am today."

He began his professional career as a musician, choir director, and singer at the tender age of 14. Throughout his musical journey, he has had the privilege of working with many esteemed artists like the late Dr. Walter Turnbull (Director of the Harlem Boys Choir), Dr. Ysaye Barnwell (of the Grammy Award-winning vocal group Sweet Honey

in the Rock), Stanley Thurston, Bill Colosimo, Dr. Karen Kennedy, Dr. Joyce Garrett, Patrick Lundy, Richard Odom, Dr. Stephen Holmes, Dr. Marco Merrick, and Twinkie Clark, among others.

He has founded three semi-professional groups: His W.I.L. Community Choir, Unique Sounds of Love, and To Be Continued Youth Choir. Each group has been recognized and admired for their ability to sing multiple genres of music as well as their enticing stage presence. He also created the acclaimed workshop, *How Much Do You Love It?*, that has traveled to Bermuda, Italy, Guatemala, Germany, and Africa.

Joshua is the Minister of Music at Hall United Methodist Church of Glen Burnie. He also tours as music director for world-renowned choreographer Rennie Harris, and actively music directs productions within the private and public school systems. He joined the Gay Men's Chorus of Washington, DC as Assistant Conductor in December 2019, and is very excited to also conduct Seasons of Love.





## **Solomon HaileSelassie, Stage Director**

Solomon HaileSelassie is a director, stage manager, designer, and film maker. Since 2015, he has served as GMCW's stage manager for our main stage concerts. He attended the Duke Ellington School of the Arts and Winston Salem State University where he trained in both vocal music and theater, New York Film Academy, and received his substantive professional training at The Studio Theatre and 2nd Stage.

His recent directing credits include *The Passage*; *Phones*; *Lunch Dream*; *Girls*; *Waiting for Godot*; *The Shape of Things*; *Three in a Hallway* (*Ebenezer's Ghosts*); *[Almost] William Shakespeare's, National Lampoon's, Family Guy's, MTV's: The Real Thanksgiving Vacation at Macbeth's* (working title); *Punching People You Never Met*; *Georgia Avenue Nocturne*; *Hello | Brother*; *Sonata*; *Carrie*:

*The Musical* (assistant director); *The Rocky Horror Show* (assistant director); and *Twisted* (assistant director).

Solomon was born and raised in DC and is proud to be a very-native son. He is the Resident Production Designer/Manager for the Library of Congress, the Resident Stage Manager for Longacre Lea, where he is a company member, and is the Founding Director of Artistic Collaboration for Annexus Theatre Company. He continues to be a non-equity professional stage manager because he is committed to maintaining access to high quality stage managers for small, underfunded, or under recognized professional theaters.



## **Theodore Guerrant, Principal Accompanist**

Now in his 39th season as GMCW's principal accompanist, "Dr. Teddy" is arguably the longest-tenured collaborative pianist for a single chorus within the entire GALA Choruses network. He has been honored in various ways throughout his almost four decades of service including a Circle of Excellence Award in 2001, with a plaque honoring his 25-year milestone in 2008, and, finally, with a Distinguished Service Award from the Gay and Lesbian Activists Alliance in 2011 for his long tenure with GMCW. He began with GMCW in 1983 as co-accompanist with Jim Holloway, and has served under every GMCW conductor from founding director Jim Richardson to Thea Kano, traveled with the Chorus to various cities across the United States, two Canadian provinces, three Scandinavian countries, and can be heard on many GMCW recordings.

Dr. Teddy, who grew up in College Park, Georgia during the 1950s, studied with his aunt, Eliza Holmes Feldmann, who was then artist-in-residence at Brenau College in Gainesville, Georgia. As a high school senior, he accompanied five choral ensembles and played five Sunday church services weekly. He received degrees in keyboard performance from the University of Georgia (B.M. piano cum laude; M.F.A. harpsichord), the University of Wisconsin (M.M. piano), the University of Maryland (D.M.A. piano), and the Peabody Conservatory of Johns Hopkins University (G.P.D. organ), and studied piano in Buriton, England, with Denise Lassimonne.

Dr. Teddy is also organist-choirmaster at Christ Church Parish Kensington (Episcopal), accompanist for the National Philharmonic Chorale (the resident chorus of the Strathmore Music Center in Rockville), where he was awarded for his over 30 years of service, and associate director-accompanist for the Central Maryland Chorale. He also teaches on the staff of the University of Maryland School of Music as a coach-accompanist.



### Craig Cipollini, Choreographer

Craig began with GMCW in 2004 as a featured dancer. His background is primarily musical theater, having performed all over the East Coast and abroad. He toured with productions of *A Chorus Line* and *42nd Street*, in addition to many regional, summer stock, and dinner theater credits. He was also a member of the DC Cowboys Dance Company, performing with the group all over the United States, in Toronto, and in Budapest, Hungary. He also performed with the group when they appeared on NBC-TV's *America's Got Talent* where the group reached the Top 40.

Craig has worked extensively as a director and choreographer. Some musicals he has directed and/or choreographed include *Cabaret*, *Thoroughly Modern Millie*, *The Will Rogers Follies*, *Annie*, *Hair*, *Carousel*, *Sugar Babies*, *Anything Goes*, *42nd Street*, and *West Side Story*, to name a few. He directed and choreographed *One Night in New York!* at the 2013 Capital Fringe Festival where the show won Best Overall Production and Best Choreography. He has been GMCW's resident choreographer since 2006. He directed and choreographed GMCW's productions of *The Best Little Whorehouse in Texas*, *The Rocky Horror Show*, and *Xanadu*, as well as *Men In Tights: A Pink Nutcracker* (2010), *Seven*, *Divas*, *A Gay Man's Guide to Broadway*, and *That '80s Show*. He holds bachelor's degrees in theater and art/visual communications, a masters degree in arts management, and is also a freelance illustrator.



### James Ellyz, II, Choreographer

James Ellyz began his dance training at Northwestern University in 1989. He performed primarily in musical theater until starting with modern dance in 1999 in San Diego. While in San Diego, he danced primarily with San Diego Dance Theatre and the California Ballet Company. He also performed with Butterworth Dance Company and LaDiego Dance Theater. He directed the Gay Men's Chorus of San Diego's productions of *Oliver Button is a Sissy* and *Nutcracker: Men in Tights*. In 2004, he was invited to serve as one of the international judges for *Showcase!*, the Australian national dance competition.

Since moving to DC in 2008, James has performed with Dakshina/ Daniel Phoenix Singh Dance Company and the DC Cowboys. He directed GMCW's productions of *Oliver Button is a Sissy* and *Von Trapped*. He serves many roles in GMCW depending on the concert:

singer, dancer, dance captain, choreographer, stage director, and audition co-coordinator... and delights in them all! By day, James is a family physician at the Defense Health Agency.



# gmcw members

## TENOR ONE

Moses Abraham  
Michael Aylward  
Isaiah Batey  
Jason Belk  
Rick Bennett  
Thomas Boeke (SL)  
Matthew Brewer  
Derrick Brown  
Ben Bugajski  
Pat Burns  
Fancy Butler  
Phillip Carson  
Peter Cheney  
Chad Clayton  
Ted Cooper  
Matt Devino  
Alex Domini  
Kasey Dunton  
Vinz Dy Cruz  
Adam Edgerton  
Jimmy Edwards  
Aaron Evans  
Randyn Fullard  
Paul George  
Tim Gillham  
Jay Gilliam  
Fidel Gomez  
Alberto Gonzalez  
Nicholas Goranites  
Jonathan Grant  
Dan Gurchinoff-  
Schlebach  
Johnny Hadlock  
Jajuan A. Harris  
Mark Hegedus  
Meg Hemmingson  
Matt Holland  
Matthew Horton  
Reginald Humphries  
Jesse Jackson  
Abel Jimenez  
Henry Johnson  
Garrick Jordan  
Michael Kaiser  
Todd Katschke  
Keegan Kienzle  
Myron Kimble-Marvel  
Rick Knight  
Bert le Roux  
Joseph Levin-  
Manning  
Gabriel Lopez  
Rinaldo Martinez  
Carl Mitchell  
Rene Molina  
Kerry Neal  
Dennis Palaganas  
Sharon Palmer  
Jordan Peyser  
David Pfeiffer  
Sophia Pizzi

Deborah Potter  
Freddie Quimbley  
Gary Regan  
Jack Reiffer  
Ellery Rhodes  
Raymond Rinaldo  
Hans Carlo Rivera  
Jon Schmidt  
Mario Sengco  
Evan Shaver  
April Sizemore-  
Barber  
Josh Smith  
Lamar Smith (SL)  
Brandon Steele  
Jeb Stenhouse  
Jason Suggs  
Matthew Teubert  
Kevin Thomason  
Santos E. Torres  
James Turner  
Kevin Webster  
Joseph Wenninger  
Steven West  
James W. Williams

## TENOR TWO

Timothy Allmond, Jr.  
Brent Almond  
Ramsey Amad  
Brooklyn Anderson  
Tom Augustin  
Paul M. Baker  
Jay Ball  
Pradipta Banerjee  
Carlos Barillo  
Eric Belkengren  
Guy Bosworth  
Johel Brown-Grant  
Jonathan Chaffin  
Nick Chantiles  
Scott A. Concilla  
Christian Cosby  
André Cotten  
Andrew Creech  
Stephen Mark Crisp  
Tony Cunningham  
Robert Dean  
Giancarlo D'Elia  
Travis Jon Dichoso  
James Dryburgh  
Darryl Eaton  
Jhonny Escorcia  
Morgan Ewing  
Edgar Farfan  
Tom Fenninger  
John W. Fichtel III  
Evan R. Fitts  
Jay Frisby  
Cody Fulton  
Malcolm Gant  
Anthony Gipson

Brian Glover  
Xavier Griffin  
Carter Grimes  
Tom Guarino  
Drew Hastie  
William Hernandez  
John Hogan  
Kyle Holland  
Raymond Honeycutt  
John Jowers  
Matt Komornik  
Matthew Kott  
Brian Kuhn  
Shane Lawson  
Mike Lemon  
Scott Linder  
James Madigan  
Jonathan Malave  
Neelesh Manandhar  
Joal Martin  
Quincy Mata  
Adrian Mayse (SL)  
Charles Mckenna  
Jonathan McNelis  
Don Medor  
Jay Michal  
Keygan Miller  
William Miller  
Josh Millson-  
Martula  
Carl Morgan  
Javon Byam  
Dan Nguyen  
John O'Brien (SL)  
Neil Offner  
Pavan Panjeti  
Elishua Perez  
Humberto Perez  
Jeffrey Peterson  
Joshua Peterson  
Darryl Pilate  
Chad Rabago  
Mikal Rasheed  
Evan Revak  
Ryan Rigazzi  
Kenneth Riley  
Bill Robinson  
Calvin Robinson  
Sean Robinson  
Ryan M. Robison  
Jami J. Rodgers  
Kenneth Roraback  
Ted Sengpaseuth  
Robert Serpa, Jr.  
Tyler Shapiro  
Vincent Sherry  
Aaron Spencer  
Scott Starin  
Cory Stephens  
Kevin Sweitzer  
Jim Tavenner  
Michael Toth

Guye Turner  
Alex Tyson  
JJ Vera  
Bernard Vicary  
Jim Voltz  
Nicholas Walker  
Hirsch  
Bryce Weems  
Silvio Weisner  
Kevin Wenzel  
Cooper Westbrook  
Ryan L. Williams  
Matt Williamson  
Tom Woerner  
Joe Wrenn  
Micah Yarbrough  
Andre Zarate

## BARITONE

Tommie Adams, Jr.  
Robert M. Agnello  
Ralph Alston (SL)  
Emérito Amaro-  
Carambot  
Frank Anania  
Schylar Baber  
Zachary Barger  
Billy Barry  
Matthew Barth  
Nicholas Bennett  
Corey Bent  
Joseph Berlin  
Andrew Boyask  
Adam Boyd  
Sam Brinton  
Bart Brooks  
Kyle Marcus Bryant  
Joe Burton  
Michael Cadenhead  
Joe Canter  
Donald Chandler  
Jeffrey Allen Chelsky  
Cory Claussen  
Larry Cohen  
Demitrian Cook  
Jake Cundiff  
Iván Dávila  
Marc de la Peña  
Xitlali Dobbs  
Morgan Dori  
Brian Doyle  
Ryan Dressel  
Brian Duckworth  
Michael Dumlao  
James Ellzy (SL)  
Brandon Fisher  
Andre Gary-Mack  
Cliff Gilbert  
Adrian Gillem  
Robert Ginzel  
Michael Gottlieb  
Matthew Graf

Daniel Grahm  
Neil Graves  
Christopher Grieder  
Joey Haavik  
Rob Hall  
W. Shane Hall  
Ben Harris  
Howland Hartley  
Gregoriah Hartman  
Kenneth Hewitt (SL)  
James Hillis  
Raymond Hoffman  
George Huffman  
Hunter Jackson  
Don Jodrey  
Joseph Jozlin  
David Karnick  
Paul Kelsch  
Brett Kessler (SL)  
Doug Kilburg  
Stuart Kopperman  
Ezra Jay Kottler  
Chris Kuchnicki  
Daniel Lacovara  
Jason Leger  
Dillon Lewis  
Matthew  
Lingenfelder  
Bill Lipsett  
Jiyang Liu  
John Lopez-Joubert  
Nico MacDougall  
Steven Magenheimer  
David McAuley  
David McCullough  
Edward McDonough  
Michael McGovern  
Michael McKibben  
Nicholas Miller  
Ross Miller  
Matty Mitchell  
Gegg Moreland  
Kevin M. Morris  
Shawn Morris  
Samuel Musili  
Dana Nearing

Paul Negron  
Patrick R. Nelson  
Jack Newman  
Paul Nicholzen  
Clint Novotny  
Derek Orr  
Jim Orrell  
Trevor Partridge  
Robert Pazhwak  
Lori Perkins  
Gregory Plavcan  
Lawrence Poole  
Andrew Powaleny  
Vincent Ramos  
Charles Ramsey  
Alexis J. Rangel  
Thomas Reiker  
Kenneth Riley  
Arty Rivera  
Brandan Robertson  
Mark Rohrbaugh  
Dillon Roseen  
Jamey Sadownick  
Ian Savoy  
Jamel Szazuete-  
Jones  
Kellen Schefter  
Ezra Seyring  
Derek J. Smith  
Lonny Smith  
Michael B. Smith  
Erich Sommerfeldt  
Lynn Sunderman  
Alex Surlis  
Derek Swick  
Conrad Sylvanus  
Carlton K. Taylor, Jr.  
Jahtay Teh  
Brian Tucker  
Joaquin Vargas  
Arturo Vega  
Dennis Vonasek  
Paul Voorhees  
Aaron Wabinga  
Brian Watts  
Kevin Watts

John Weibel  
Virgil E. Welch  
Charles Willett  
Oliver Williams  
Ray Yankey

## **BASS**

Jay Adams  
Mike Allen (SL)  
Ben Aparicio-Coto  
W. Eric Balthrop  
Jarrod Bennett  
Michael Brinkman  
Marcus Brown  
Ethan N. Chiang  
Steve Crutchfield  
Rick Davis  
Chipper Dean  
Robert Dragoset  
Robert E. Finn  
Brett Fox  
Steven Frann  
Romm Gatongay  
Bernd Geels  
Jim Gruschus  
Gibson Haynes  
John-Paul Hayworth  
Edon Hoppener  
Michael Hughes  
Cole Jaconski  
Dennis Jaffe  
John Knapp  
Nick Lawton  
Samilet Lee (SL)  
John Levensgood  
Scott Loudin  
Andrew McIlroy  
Jonathan McNeil  
Alex Melnik  
Brandon Mock  
John Munt  
James Murphy  
Colin Muth  
Rob Neighbour  
Yoshiyuki Nishio  
Ronald Norberg

Edward Oseroff  
Matthew Pack  
David Paul  
Todd Paul  
Dana Peterman  
Steve Pflasterer  
Chris Porter  
John Quiñones  
Dean Reichard  
William Riggins  
Carlos Rodriguez  
Craig Ruskin  
Roberto Sada  
John Santell  
John Schwanke  
Alec Sherman  
Tavon Shiheem  
Stephen Sides  
Morgan Slusher  
Steve Spar  
Jahdiel Torres-Cabá  
David Treacher  
Lyn VanNoy  
Jerry Washington  
Dennis Williams  
Dustin Winkel

## **SUPPORT**

Danny Aldous  
Chris Asaro  
Sherri Bale  
Michael Bigley  
Sean Cator  
Peelee Clark  
Michael Cunningham  
Robert Featherstone  
Charles Goodall  
John Goodrich  
Solomon  
HaileSelassie  
Carroll Hanson  
Steve Herman  
Eve Hill  
Jeffrey Hollands  
Derrick Jones  
Mark Klein  
Robert Klein (SL)  
Frederick J. Krebs  
Greg Kubiak  
Betsy Libretta  
Dale Mott  
Steven Oatmeyer  
John U. Robinson  
Randy Snight  
Nicole Streeter  
Nadia Subaran  
Gary Turner



SL = Section Leader

# LEADERSHIP

## Board of Directors 2021 — 2022

Chair.....	Jay Gilliam
Vice Chair.....	Nicole Streeter
Secretary.....	Michael Bigley
Treasurer.....	Jeb Stenhouse
Sherri Bale, James Ellzy, Romm Gatongay, Robert Ginzel, Rob Hall, Carroll Hanson, Eve Hill, Ray Hoffman, Michael Hughes, Fred Krebs, Dale Mott, Steve Oatmeyer, Jack Reiffer, Micah Yarbrough (ex officio)	

## Artistic Staff

Artistic Director.....	Thea Kano
Associate Conductor.....	C. Paul Heins
Assistant Conductor.....	Joshua Sommerville
Production Manager.....	Chipper Dean
Stage Director.....	Solomon HaileSelassie
Technical Director.....	Jarrold Bennett
Principal Accompanist.....	Theodore Guerrant
Accompanist.....	Alex Tang
Accompanist.....	Raymond Rinaldo

## Administrative Staff

Executive Director.....	Justin Fyala
Director of Development.....	André Coleman
Director of Marketing.....	Craig Cipollini
Director of Patron Services.....	Kirk Sobell
Outreach Manager.....	Michael Hughes
Intern.....	Elena Vol

## GMCW Membership Officers

Membership President.....	Micah Yarbrough
Vice President for Membership.....	Paul Negron
Vice President for Events.....	Shawn Morris
Vice President for Communications.....	Santos Torres
Vice President for Volunteerism.....	Pradipta Banerjee
Vice President for Social Justice Programs.....	Alex Tyson
Vice President for Diversity & Inclusion.....	Jahtay Teh

# PRODUCTION STAFF

Stage Manager.....	Solomon HaileSelassie
Associate Production Manager.....	Mark Klein
Production Crew Chief.....	Bernard Vicary
Stage Crew.....	Chris Asaro, Michael Cunningham, John Goodrich
Build Crew.....	Pradipta Banerjee, Gibson Haynes, Brian Kuhn, Sam Lee, Jonathan McNeil, Joshua Millson-Martula, Carl Mitchell, Santos Torres, Arturo Vega
House Manager.....	Bob Klein
Archival Video.....	Steve Herman
ASL Interpreter.....	Jamie Sycamore

Special thanks to the Lincoln Theatre team.



# IN MEMORIAM

We remember our members who have been lost to us over the years. Their spirits live on with us and we honor their memory. Respectfully, we request if you know of anyone whose name has been omitted from this list, please contact us at 202-293-1548 so that we may continue to celebrate and honor the contributions of all of our members.

Kenny Aaron  
Jan Albright  
Jim Arshem  
Milton Artis  
Tom Avenmarg  
Chuck Bailey  
Nelson Bain  
Michael Baker  
Ben Barker  
Bill Barry  
Will Bellais  
Roger Bergstrom  
Kevin "KC" Berry  
Bob Bester  
Robert T. Boaz  
Michael G. Bohn  
Craig R. Bowen  
Peter Brayton  
Derek T. Bush  
C. David Bury  
Charles R. Butler, Neto  
Ted Butler  
Jim Campillo  
Russ Capps  
Bill Carwithen  
Michael Caster  
Randy Cooke  
Daniel Coombs  
Blake Cornish  
Howie Ducat  
Tom Dudley  
Bob Edwards  
Don Ellis  
Peter Fox  
Richard Fromm  
Tim Gabel  
Jimmy Galdieri  
Oscar Garcia-Vera  
Thom Gibb  
Ciro J. Graziano  
Peter Griffith  
George Guarino  
Ira Haber  
Barry Hahn  
Roger Harlow  
John B. Henderson  
Mark Hennen  
Scott Herring  
Bob Hilby  
Jim Hix  
Michael Hodge  
Marsha Holloman  
James Holloway  
R. Andy Horsley  
Joe Houle

Bill Hunnicutt  
Gary L. Janus  
Jim Jochen  
Gary Johnson  
Dan Jones  
Sunggyun Kim  
Willis R. King  
William Kranick  
Kevin LaBarge  
Steven LeBlanc  
Wayne Longest  
Steve Maddox  
Mark Mannel  
Christopher Marquis  
Phil Marti  
Leonard Matlovich  
W. Myron Maye  
James McCann  
Tim McDonough  
Donald McArthur  
Michael McElvaine  
Kathy McGee  
Gordon McGraw III  
Jim Meany  
Phil Melemed  
Jim Mench  
Mark Mennel  
Jim Moore  
John Moran  
Ron Moser  
Phil Moss  
Steve Nelson  
David Nieto  
J. Richard Norton  
Norman Nusinov  
Ron O'Leary  
Len Padgett  
Ron Paglia  
Rex Paul  
Todd Payich  
Scott Pierce  
Don Poe  
Harlan Powell  
Harry B. Powers  
Terence Powers  
H. Glenn Privette  
Dennis Quinn  
R.J. Quinn  
Steve Rappaport  
Steve Reed  
Robb Rexroth  
Ric T. Rice  
Jim Richardson  
(Founding Director)  
Tom Roeder

Larry Ross  
Tom Sena  
Charles L. Sens  
David Shingler  
Ray Siefer  
Brian Smith  
B.J. Sobus  
Gerry Soucy  
Jason Stelling  
Dennis Swick  
James D. Vranekovic  
Everett Waldo  
(Founding President)  
Phil Walsh  
Benedikt Wassmuth  
Dennis Watson  
Marvin Weeks  
Bob Widder  
Ed Wilber  
Rob Wilkinson  
Donald Wolfe  
R. Terry Woll  
Bob Wonneberger





**RE/MAX**  
ALLEGIANCE

**THERE'S NO PLACE LIKE HOME!**

www.StevePflasterer.com  
email: steve@stevepflasterer.com  
Office: 202-338-8900  
Mobile: 202-669-0714



Trust an experienced real estate professional with the most important financial investment of your life!

**Steve Pflasterer**  
34-year singing  
member of GMCW



**freddie's**  
Beach Bar & Restaurant

"... and they sent me home.  
Home. And this is  
my room. And you're all here.  
Oh, Auntie Em,  
there's no place like home..."  
...Dorothy Gale

*Come home to Freddie's  
Beach Bar and Restaurant*

**Dr. Theodore Guerrant**  
**PIANIST**  
**ORGANIST**  
**HARPSICHORDIST**  
**COACH-ACCOMPANIST**

708 Montgomery Street  
Laurel, MD 20707  
240-568-0452  
guerrant@umd.edu



A vintage typewriter sits on a dark wooden surface. To its left is a crumpled ball of white paper. A white sign is placed on the typewriter's carriage, displaying the text "Proud to support GMCW".

Proud to  
support  
GMCW

You've  
got a  
story...

We can help  
you tell it.

100 W

**VINE** STREET  
CREATIVE

MARKETING | SOCIAL MEDIA | EVENTS

[WWW.VINESTREETCREATIVE.COM](http://WWW.VINESTREETCREATIVE.COM)

   /VINESTCREATIVE

# IT'S A GREAT GAY AMERICAN SONGBOOK



**A CABARET CELEBRATING  
MUSIC FROM THE  
JAZZ ERA**

**NEW DATE &  
NEW LOCATION!**

**JUNE 26, 2022  
2PM & 6PM  
CAPITAL ONE HALL  
TYSONS, VA**

**TICKETS  
ON SALE  
SOON**

**VISIT GMCW.ORG  
FOR MORE INFO**



Facebook.com/GayMensChorusofWashington  
Twitter.com/GMCWashington  
Instagram.com/gmcwashington  
Youtube.com/GMCWashington

## **ABOUT US**

### **MISSION**

The Gay Men's Chorus of Washington, DC (GMCW) sings to inspire equality and inclusion with musical performances and education promoting justice and dignity for all.

### **OVERVIEW**

GMCW is the largest LGBTQ+ chorus in the nation's capital. We are a renowned performance group. Since 1981, we've performed shows nationally, internationally, and at-home in Washington, DC. To date, we have 250+ singing members, four select ensembles, a youth chorus, over 500 donors, and an annual audience of 10,000+. Our mission is to use music to promote equality, achieve justice, and overcome our differences. Over the last 40 years, we've put on numerous shows and done hours and hours of community outreach. We've sung and danced our hearts out around the country, including our Equality Tours in 2017, 2018, and 2019. We've been around the world, too, including stops in Cuba, Iceland, and Ukraine. We've sung for the Clintons, the Bushes, the Obamas, and the Bidens. Alongside Alan Cumming, Carol Channing, Chita Rivera, and Angela Lansbury. We've visited many prestigious venues, including the Kennedy Center, the White House, and Carnegie Hall, just to name a few.

# HARMONY AWARDS

The Harmony Award is GMCW's highest honor. Each year, awards are presented by the Chorus's Board of Directors to individuals and organizations from the community, and an individual from within the Chorus family. Recipients include:

## **Individuals from the Community:**

Peter D. Rosenstein, LGBTQ+ community activist, 2004  
David Catania, DC Councilmember, 2005  
Frank Kameny, Gay rights movement pioneer, 2006  
Adrian Fenty, DC Mayor, 2007  
Noi Chudnoff\*, business proprietor and arts patron, 2008  
The Right Reverend V. Gene Robinson, Episcopal bishop, 2009  
John Berry, Director, U.S. Office of Personnel Management, 2010  
Barney Frank, U.S. Congressman, Massachusetts, 2012  
Eric Schaeffer, Signature Theatre Artistic Director, 2014  
Kevin Jennings, GLSEN founder & Obama "safe schools" appointee, 2015  
Marsha Pearson, GMCW founder, 2016  
Muriel Bowser, DC Mayor, 2018  
Wendy Rieger, NBC4-TV news anchor, 2019

## **Organizations:**

The Mautner Project, national Lesbian health organization, 2004  
Holland & Knight, international law firm, 2005  
Food and Friends, food and nutrition service providers, 2006  
Metro DC PFLAG, education and advocacy organization, 2007  
SMYAL, 2008  
Washington DC Metropolitan Police Department's Gay and Lesbian Liaison Unit, 2009  
Immigration Equality, 2010  
Servicemembers Legal Defense Network, 2011  
Washington Blade, 2012  
Team DC, 2014  
Williams Institute, 2015  
National Center for Transgender Equality, 2016  
NLGJA: The Association of LGBTQ Journalists, 2017  
Whitman-Walker Health, 2018  
Casa Ruby and NBC Out, 2019

## **Individuals from the Chorus family:**

Steve "Soph" Herman, 2004  
Gary Regan and Roger Bergstrom, 2005  
Carl Baldwin & Gary Turner and David Streit, 2006  
Phil Rogerson, 2007  
Laurence Rosen, 2008  
Michael Baker, 2009  
Jeff Buhrman, 2010  
Greg Kubiak, 2011  
Mark Hennen, 2012  
Joe Vignali, 2013  
Tom Nichols & Dan Chadburn, 2014  
Michael E. Hill, 2015  
Christopher Grieder & Stuart Kopperman, 2016  
John Moran\* and Jack Reiffer, 2017  
Marcus Brown and Rob Hall, 2018  
Charles Berardesco, 2019

\* posthumously awarded



# CIRCLE OF EXCELLENCE

Circle of Excellence Awards are chosen annually by members of GMCW to recognize the outstanding contributions made by members of the Chorus. These awards honor those individuals who have exemplified the spirit of camaraderie, brother- and sisterhood and community in the Chorus and whose work has had lasting impact over many years.

## 1991

Fred Boykin  
Jeffrey Buhrman  
Tom Dudley\*  
Steve Herman  
Jim Holloway  
Steve Maddox\*  
Dr. Jim Richardson  
Ron Sabacek  
B. J. Sobus  
Bruce Trinkley  
Everett Waldo  
Bob Wonneberger  
Michael Ziskind

## 1992

Michael Bohn  
Eric Korpon  
Darrell Netherton  
Harry Powers  
Michael Rivard  
Rick Rosendall  
David Sisson  
Duward Sumner

## 1993

Craig Bowen\*  
Peter Brayton  
Phil Rogerson

## 1994

Rod Fiorito  
Scott Pierce\*  
David Streit  
Robert Wheeler

## 1995

Darrell Lewis  
Len Padgett  
Jim Peterson

## 1996

Michael Baker  
Roger Bergstrom  
Dick Dorr  
Dennis Swick\*

## 1997

Jack Gerard  
Charlie Merk  
Michael Milano  
Gary Regan

## 1998

Kevin Doss  
Robb Rexroth  
Laurence A. Rosen

## 1999

Jerry Carpenter  
Bob Dragoset  
Thom Gibb

## 2000

Christopher Grieder  
Gary Turner  
Joe Vignali  
Marvin Weeks

## 2001

Joe Cannon  
Teddy Guerrant  
Steven Haber  
John Perkins  
Michael B. Smith

## 2002

Carl Baldwin  
Barry W. Bugg  
Michael Cunningham  
Dan Patton  
Todd Paul

## 2003

Tom DiGiovanni  
Rick Johnson  
Kathy McGee  
Chuck Walker

## 2004

Scott Button  
Robert Klein  
Jerry Lee  
Harold Lewis  
Jack Reiffer

## 2005

Jeff Van Luyn  
Stuart Kopperman  
Edward P. Oseroff

## 2006

David Bielenberg  
Joe Canter  
Bill Cutter  
Matt Komornik  
Barrett Whitener

## 2007

Russ Capps  
Rob Hall  
Marsha Holloman  
Paul Leavitt  
Jim Murphy

## 2008

Greg Kubiak  
Rob Driggers  
Michael Hill

## 2009

Chip Crews  
Mark Hennen  
John O'Brien

## 2010

Jay Ball  
Thea Kano  
Steve Pflasterer  
Andy Van Etten

## 2011

Sherman Blow  
Robert T. Boaz  
Peter Fox  
Andrew Harmon

## 2012

Craig Cipollini  
Ron Norberg  
John "JQ" Quiñones  
Shannon Rozner

## 2013

Joe Bloomer  
Marcus Brown  
Sean Robinson

## 2014

Timothy E. Allmond  
Raymond Burditt  
Mary Scott  
Ryan L. Williams

## 2015

Emérito Amaro-  
Carambot  
Larry Cohen  
John-Paul Hayworth  
Rob Serpa, Jr.

## 2016

Chris Asaro  
Rick Davis  
Suzette Derrevere  
James Ellzy  
Rob Neighbour  
Lyn VanNoy

## 2017

Jarrold Bennett  
Chipper Dean  
Jay Gilliam  
Matt Graf

## 2018

Howland Hartley  
Mark Hegedus  
Dan Kaufman  
Mario Sengco

## 2019

Jim Arshem\*  
Corey Bent  
Romm Gatongay  
Matt Holland  
Mark Klein  
Samilet Lee  
John U. Robinson

## 2020

Ben Harris  
Derrick Jones  
Betsy Libretta  
Kevin Thomason  
Bernard Vicary

## 2021

Michael Dumlaio  
Jim Gruschus  
C. Paul Heins  
Jim Madigan  
Raymond Rinaldo  
Bryce Weems  
Micah Yarbrough

\* posthumously awarded

The Gay Men's Chorus of Washington, DC's Ovation Society is an initiative that recognizes and honors those generous individuals and families who have made planned gifts to the Chorus.

If you have already included GMCW in your estate plans, please let us know so that we can include you as a member of the Ovation Society. If not, we hope you will consider joining this special group by including GMCW in your will, as a beneficiary of a retirement account, or by setting up a charitable trust. Planned gifts can greatly reduce the amount of tax paid by your estate at the time of your death and often do not change the amount that would go to your family and friends.

While your attorney or accountant can provide you with more information, GMCW has several corporate sponsors — both financial planners and attorneys — who specialize in LGBTQ+ estate issues. We are happy to share this resource list with you upon request. As a member of the Ovation Society, you will be invited to attend special events and receptions especially for Ovation Society members.

For further information about GMCW's Ovation Society, or if you are interested in learning more about the many ways you can include GMCW in your plans, please contact Executive Director Justin Fyala, at 202-293-1548 or [jfyala@gmcw.org](mailto:jfyala@gmcw.org).

## GMCW Ovation Society

Robert Agnello & Jerry Pape  
David & Eric Akridge  
Stanley Allen  
Bill Ashley  
J. Max Barger  
Susan Barrett  
Curtis Bell  
Roger Bergstrom†  
Jeff Bonnell  
Fred Boykin & Jack Killen  
Peter Brayton†  
Michael Brinkman  
Curtis Brookshire & David Daniels  
Scott Button & David Streit  
Joe Canter  
Russ Capps† & Ken Yazge  
Steve Crutchfield & Richard Ormseth  
Rick Davis  
James Dryburgh  
Tom Dudley†  
Lars Etzkorn  
William Fuchs & Gerald Beaulieu  
Jack Gerard & Craig Arnold  
Thom Gibb†  
M. David Goldstein  
Bill Gordon  
Bob Gossard & Carl Ziebe  
J. Stephen Hall & Robert Smith  
Rob Hall & Chris Behan  
A. Howland Hartley & Will Lee  
Joshua T. Hatfield Charles  
John-Paul Hayworth  
Mark Hennen†  
Steven Herman & John DiBenedetto  
Michael Hill & Peter Korns

Gary Janus†  
Ken Kero-Mentz  
Greg Kubiak  
Nick Kyros & Anthony Cook  
Jim Lardner  
Jerry Lee, Joe Vignali, & Chris Asaro  
Harold Lewis  
Scott Linder  
Bill Lipsett & Eric Bolda  
Steve Maddox†  
Frank Maiellano  
Michael McElvaine†  
Kathleen McGee† & Marsha Holloman†  
William Moran  
Kevin Morris  
Jim Orrell  
Todd Paul  
John Perkins  
Steve Phan & Rick Poster  
Harry B. Powers†  
Brandon Quesnell & Steve Katsurinis  
Steve Rappaport†  
Jack Reiffer  
Phil Rogerson  
Shannon & Steve Rozner  
The Savada-Stevenson Family  
Doug Sellers & Mark Eubanks  
Ed Senn  
Duward Sumner  
Robert Switala & William Edgin  
Steven Toporoff  
Jim Weinstein  
Robert Wilkinson† & Kevin Gowen  
Jim Woods & Scott Shields

† Deceased



# Perform with **confidence**

With the singing app used by solo artists, musical theatre casts, choirs, and singers of all levels.

Try it for free for your **best performance yet.**

[harmonyhelper.com/dcgmc](https://harmonyhelper.com/dcgmc)

**Travel is back! Contact for these or other trips!**

VACATION WITH

## *Cari Travels*



### **FRENCH DAZE & IBIZA NIGHTS**

**NEW SHIP!** 7 Nights, Luxury Adults Only cruise. Barcelona • Marseille • Cannes • Olbia • Ibiza • Barcelona. Suites with exclusive Rooftop Access, select beverages, priority access. Pre/Post Cruise Extensions Available.



### **COSTA RICA: ARENAL AND GUANACASTE**

Enjoy a romantic, family, or friendly getaway on this eight day, tailor-made trip combining spectacular volcanic views, invigorating hot springs and the dazzling white-sand beaches. With plenty of time at leisure, you are invited to relax, unwind and connect.



### **SOUTH AFRICAN SAFARI**

Africa offers incredible wildlife and rich culture, delivering exceptional safaris for any traveler, including the LGBTQ+ community. A dedicated safari team, some of whom are LGBTQ+, love welcoming all guests. All vetted lodges and camps focus on inclusion and sensitivity.

South Africa's Natural Wonders | 10 Days: Cape Town, Grootbos Private Nature Reserve, Shamwari Game Reserve

Experience South Africa | 11 Days: Cape Town, Durban, Sabi Sand Game

**[www.caritravels.com](http://www.caritravels.com) | 202.262.3004 | [cari@caritravels.com](mailto:cari@caritravels.com)**



Since 1981

## **CHANDLER PIANO SERVICE**

Donald Chandler  
Registered Piano Technician  
443-924-8264  
[ddpctuner@aol.com](mailto:ddpctuner@aol.com)

Piano Tuning, Repair, Regulation, Rebuilding  
Humidity Control Systems  
Appraisals & Consulting



# WORLD-CLASS WINE, EXPERTLY PAIRED WITH THE



# Community

Grape Intentions proudly partners with GMCW  
and 15 other charitable organizations so that you  
can help them a little bit each time we send you wine

## INDULGE IN DOING GOOD®

Take the quiz and we'll  
curate a subscription of  
world-class wines  
you'll love

Save  
**35%**

*on your first shipment  
with code*

**GMCW2235**







*You're one of a kind.*

Shouldn't your financial advice be unique, too?  
We tailor our advice and services to *you*.



**Woody Derricks, CFP® ADPA®**  
President  
(410) 732-2633  
[Woody@PartnershipWM.com](mailto:Woody@PartnershipWM.com)



Partnership**Wealth**  
Management

# GMCW DONORS

The Gay Men's Chorus of Washington, DC is grateful to the following individuals and organizations who support the Chorus and its many activities. The gifts listed here are from January 1, 2021 to February 1, 2022, and include annual gifts and partnerships. Thank you!

## CORPORATE AND FOUNDATION DONORS



## DIRECTORS CIRCLE

---

GMCW is pleased to honor current and former members of its Board of Directors who have made multi-year commitments to continue their legacy of leadership within the Chorus.

John F. Benton & David Briggs  
Charles Berardesco & Jeff Thurston  
Chipper Dean  
Jack Gerard & Craig Arnold  
Rob Hall & Chris Behan  
Derrick Jones  
Stuart Kopperman & Christopher Grieder  
Greg Kubiak

Tom Munteer  
John O'Brien  
Jack Reiffer  
David Shotwell & Erin Short  
Jim & Barbara Tozzi  
Robert G. Wheeler & Darrell L. Netherton  
Mike Ziskind & Jeff Davis

## CHORUS CHAMPION (\$25,000 and up)

---

Anonymous  
Charles Berardesco & Jeffrey Thurston  
The Morris & Gwendolyn Cafritz Foundation  
DC Commission on the Arts & Humanities  
Bill Lipsett & Eric Bolda

Leonard Litz Foundation  
Roger & Jeane Samuelsen  
Small Business Administration  
US Commission on Fine Arts

## EXECUTIVE PRODUCER (\$10,000 to \$24,999)

---

Anonymous  
Sherri Bale & Eric Spears  
A. Howland Hartley & William Lee  
Mark Hegedus & Chris Wilson

Cathryn & Fred Krebs  
Jim Orrell  
Lawrence Poole & Steve Oatmeyer

## PRODUCER (\$5,000 to \$9,999)

---

Anonymous  
Rob Finn & Dan Shaver  
Rommuelle Gatongay & Jay Muntz  
Jack Gerard & Craig Arnold  
Jay Gilliam & Kevin Sweitzer  
Rob Hall & Chris Behan  
Carroll Lee Hanson

Andrew Hastie  
Michael Hughes  
Derrick Jones  
Matthew E. Kornornik  
Harold Lewis  
Venable Foundation

## STAKEHOLDER (\$2,500 to \$4,999)

---

Mike Allen & David Karnick  
Brent Almond & Nicholas Pirulli  
Anonymous  
Thomas Augustin  
John F. Benton & David W. Briggs  
Michael Bigley & Alan Shenman  
Thomas Bonsaint  
Suzette Derrevere & David Lietz  
James Elzy & Francis O'Malley  
Joseph Evans & Justin Davis-Evans  
Mark Garcia  
Robert Ginzel  
Michael Gottlieb

James Gruschus  
Eve Hill  
Raymond Hoffman  
Intersections International  
Thea Kano  
Greg Kubiak  
Larry & Samilet Lee  
Jennifer Mandel  
William Moran  
Tom Munteer  
John O'Brien  
Gary Regan  
Jack Reiffer

# gmcw DONORS

Kenneth Roraback  
Thomas & Gwen Rowe  
Rob Serpa & Gibson Haynes  
Jeffrey Slavin  
Jeb Stenhouse & Mark Klein

Nicole Streeter  
Kevin Thomason  
Jim & Barbara Tozzi  
Jessica & Stuart Trevelyan  
James W. Williams

## BENEFACTOR (\$1,000 to \$2,499)

Frank A. Anania  
Anonymous  
Barbara S. Barth  
Rick Bennett  
Bradley Hills Presbyterian  
Church  
Phillip Carson  
Cory Claussen  
Chris & Chase Maggiano  
Rick Davis  
Chipper Dean  
Jessica Denman  
Bob Dragoset  
Michele Esposito  
Robert J. Featherstone  
Brian Feit  
Joan E. Fina  
Bonita Fyala  
Justin Fyala & Richard Fowler  
Kevin Gowen  
Ben Harris  
Rich Harrison & Steve Johnson  
John-Paul Hayworth

Steve Herman & John  
DiBenedetto  
Michael Hill & Peter M. Korn  
Tom & Doris Kelley  
Mike Kemper & Meredith  
Hendrickson  
Rick Knight & Jeffrey Rydbom  
Stuart Kopperman & Christopher  
Grieder  
John Lineberger & Jeff  
Sponaugle  
Julie & Mark Lowe  
Don Maish & Jim Harlow  
Joan Tabor Marionni  
David McAuley & Dan Johnson  
William & Catherine Moberly  
Dale A. Mott & Kenneth P.  
Hyle, Jr.  
Rob Neighbour  
Tom Nichols & Dan Chadburn  
John Perkins  
The Rt. Rev. Gene Robinson  
Cathy Rutherford

David Shotwell & Erin Short  
Meghan Skelton & James  
Connell  
Carl Wayne Smith & Michael  
Burke  
Derek Smith  
Nadia Subaran  
Heather Sullivan  
David Talmage  
Jim Tavenner  
Grant Thompson  
Chris Thomson & Carl  
Beauregard  
James M. Turner  
Terry Vick  
Silvio Weisner  
Robert G. Wheeler & Darrell L.  
Netherton  
Chuck Willett  
Nancy & Marc Williams  
Kimball Winn & Stephen O'Neill  
Mike Ziskind & Jeff Davis

## SUPPORTER (\$500 to \$999)

Eddie Adkins  
Robert M. Agnello & Gerard Pape  
Timothy Allmond & Robert Klein  
Anonymous  
Jay Ball  
Matthew Barth  
Dr. John Batchelor  
Bob & Carl  
Felix Boccadoro & Allan Halprin  
Tom Boeke & Vijay D'Souza  
Leon Boyce  
Kevin Burke & Steven Browning  
Joe Canter  
Han Chen  
Diane Clayton  
Christopher Cochran  
Iván Dávila & Dean Reichard  
Wendy Dean  
Giuseppe DeBartolo  
Michael Dumlaio & Daniel Arrieta  
Thomas Emig  
Joe Enright  
Barbara D. Eyman & Robert  
Antonisse

Don Griesheimer & Kelvin Nance  
C. Paul Heins & Matt DelNero  
Daniel Hicks & John McCall  
Bill Hillegeist  
Donald Horn  
Joanne Devine Jordan & William  
L. Jordan  
The Kipers Family  
Lynn & Ed Kneeder  
Dana & Ray Koch  
Col. Chris Lackovic  
Jerry Lee, Joseph Vignali, & Chris  
Asaro  
Darrell Lewis  
Scott Little  
Jay Lucey  
Keith D. McIlhenny  
Andrew McIlroy  
Stephen McManus  
James Murphy  
Billy Newell & Byron Stevens  
Edward O'Brien  
Silas Pace  
James F. Padgett

Dennis Palaganas  
David & Tammy Paynter  
Steve Pflasterer  
Andrew Powaleny  
Bill Purdy & Michael Toth  
Cori Quirk-Keefe  
Jami Rodgers & Scott Morgan  
Ivan W. Skowronski-May  
Kathleen Smith  
Christopher & Janine Sobell  
Kate & Jeremiah Strack  
Terese Swatt  
Bob & Marianne Sweitzer  
Alexander Tang & Robert  
Bagnall  
David & Marlene Thompson  
Julian Trail & John DiGiovanna  
George Troutman  
Arun Venkataraman  
Bernard Vicary  
Anne Voegel  
Lee Voegler  
Bryce Weems  
Robert Wilson & Elliott Lapin

## FRIENDS (up to \$499)

Torben Aarsand  
Tommie Adams, Jr.  
Ellen Adams  
Tim Agar

Marla Aizenshtat & Beth  
O'Callaghan  
Linda Aja-Chaffin  
Jenny Alcivar

Nikolaos Alexiou  
Gretchen Almstead  
Jane Alpert  
Lynn Altenhof



Ramsey Amad  
 Emérito Amaro-Orama  
 American Pops Orchestra  
 Carol Anderson  
 Catherine Anderson  
 Darryl Anderson  
 Tony Anderson & Kevin Lores  
 Anonymous  
 Terry Applebee  
 Barbara Archibald  
 The Arlia Family  
 Allan Armus  
 Mike & Stacie Arpey  
 Ayran Athey  
 D. Atwell  
 Julie Avera  
 Brian Aylward  
 Patrice Aylward  
 Gregory Baker  
 Judith Baker  
 Thomas Baldridge  
 Carl Baldwin & Gary Turner  
 J. Robert & Donnie Ball  
 Rebecca Ballard  
 Pradipta Banerjee  
 Anne Barber  
 Steven Barge  
 Kerry & Carolyn Barry  
 Kyle Barth  
 Tony Beane, DVM  
 Gerald Beaulieu & William Fuchs  
 Dave & Diane Bechtol  
 Allison Becker  
 Robin Bectel  
 Marcia Bellamy  
 Scott Beller  
 Benevity Community Impact  
 Fund  
 Laurie Bennett  
 Michael Bermudez  
 Gene Berry & Jeff Campbell  
 Kathy Blackburn  
 Neal Bobys  
 Ann Bond  
 Leeann Bond  
 Thomas Bondarenko  
 Jobyl Boone  
 Doug Booth  
 Collin Bradley  
 Steven Brady  
 Karen Brau & Ed Miller  
 Amy & Chester Brenan  
 John & Elizabeth Breyer  
 Rosalyn Brown  
 Lynne Browne  
 Katherine Brucato  
 Elizabeth Bruening  
 Nancy K. Bryant  
 Dale Richard Buchanan  
 Buron Buffkin  
 Thomas Bull  
 Jeff Burger  
 Ted Burkett & Richard Clark  
 Judy Burkholder  
 Andrew Burnett  
 Kenneth Burton & Matthew  
 Castrina  
 Rev. Karen & Peter Byrne  
 Marco Cagetti  
 Tim Caggiano  
 Stephen Cain  
 Edward Campbell  
 Neil Cannon  
 Joe Cantor  
 Susanne Carlson

Jerry Carpenter  
 Clau Castaneda  
 James & Susan Catlette  
 Hillary Catlin  
 Jonathan Chaffin  
 Suzanne Chamma  
 Alan Chasan  
 Jeff Chelsky  
 Hari Cherupalli  
 Bill & Carol Chiasson  
 Katherine Chih  
 Rose Ann Cleveland  
 Mr. & Mrs. David Clites  
 Rachel Cloud  
 Thomas Cluderay  
 Barbara Cobb-Jepperson  
 Ward & Christie Coe  
 Linda Cohen  
 John Collier  
 Mark Combs  
 Kathleen Compton  
 Skip Concilla  
 Tracy Cooley  
 Elizabeth Cooper-Martin  
 William Cordes  
 Paula Cotter  
 Janice Creneti  
 Michael Cunningham  
 Leslie Curley  
 Richard Custer  
 Paige Cutrona  
 Angela Cutter  
 Tad Czyzewski  
 RuthAnne Darling  
 Nicholas Datlowe  
 David & Holly Mendel Fund  
 Amy Davies  
 Madeleine Davison  
 Robert Dean  
 Don DeGeorge  
 William Dehnke  
 Nikki & Jana Denning-Jones  
 Loren Dent  
 Zak & Kira Dentes  
 Jenaya Devan  
 Carol & William Dever  
 Jacob Diamond  
 Joanna & Wayne Dionne  
 Trevor Dodge  
 Thomas Donahue  
 Dick Dorr  
 Miriam Douglass  
 Katie Doyle  
 Lisa Dragoset  
 David Drothler  
 Susan Duberstein  
 John Ducote  
 Paula Durbin  
 Alecia Dyer  
 Bill Eadie  
 Christopher Eanes  
 Darryl Eaton  
 Darrel Eddingfield  
 Karl Eiholzer  
 Marion Ekpuk  
 Bill & Kathleen Elliott  
 Daniel Elmer & Christopher Hoh  
 Kathy Engholm  
 David & Carol Erion  
 Raymond Ess  
 Roni Falk & John Harper  
 Jim Farkas  
 Allen Fawcett  
 Michael Fetchko & Keith Petrack  
 Helen Fiori

Kathy Fischer  
 P. Folan  
 Alex Ford & Hal Ponder  
 Karen Ford  
 Lemerle Ford  
 Christine J. Foster  
 Susan Fowler  
 Frank Fox  
 Elizabeth Friberg  
 Gayle Fullerton  
 Sherry Fullerton  
 Crystal Fyala  
 Ginny Gano  
 David Garofalo  
 Thad Garrett  
 Terri Gault  
 Paul George  
 Lauren Geraghty  
 Howard E. Ghee, Jr.  
 Mary Gleason  
 Karin Goers  
 M. David Goldstein  
 Victor Goodman  
 M. Chad Gordon  
 Hilton Lee Graham  
 David Grahm & Jill Nusbaum  
 Amy Grimes  
 Gregg Grisa  
 Steve Groh  
 Robert Gronenberg  
 Mary Gropp  
 Alicia Guajardo  
 Thomas Guarino  
 Roy Guenther  
 Norene Guilford  
 Gailyn Gwin  
 Candice Haaga  
 Joan Dickinson Hager  
 Wahid & Lavera Hamidi  
 Lisa Happ  
 Shaun Hardy & David Wyrick  
 Meredith Harkel  
 Wade Harrell  
 LeeAnn Hart  
 Robert Hawks  
 Daniel Hayes  
 Courtney Hedrick  
 Craig Heintz  
 Thomas Helinski  
 Joe Henderson  
 Brad Hendricks  
 Paul Herman & Karen Goldman  
 Christopher Herrmann  
 Ken Hewitt  
 Howard Hicks  
 Kurt Hiele & Edward Puzio  
 Janette Hillis-Jaffe  
 Carol & Bill Hindle  
 Donald Hinman  
 Donald L. Hinshaw, Jr.  
 Judith Hiott  
 Rona Hokanson  
 Bonnie Holcomb  
 Lee Hollaar  
 Teena Hollingshead  
 Byron Hoover  
 Michael Hopkins  
 Daniel Horter  
 Russell Hughes  
 Fern Hun  
 Lauren Hunt  
 Adam Hunter  
 Joseph Izzo  
 Steven Jacobs  
 William Janz

# GMCW DONORS

Meredith Jason  
Jean Jawdat  
Nicole Jensen  
Henry Johnson  
Kelly Johnson & Todd Gerdes  
Thomas P. Johnson  
Kimberly Johnston  
Lori Jonas  
Brenda Jones  
Anna Jung  
Todd Katschke & Don Wynne  
Eric Kearsley  
Michelle Kelly  
Paul Kelsch & John Cantolina  
Vincent J. Kensil & PA  
Chattaviya  
Mark Kent  
Kenneth Kero-Mentz  
Constance Kerrigan  
Michael Kharfen  
William Kibby  
Doug D. Kilburg  
Megan King  
Ty Kitchen  
Ann Klinck  
Roger Klorese  
John Knapp & Tim Gillham  
Ed Koch & Matthew Fox-Koch  
Michael Kolakowski  
Hannah Kolodner  
Jeffrey Kost & Michael  
Comparone  
Marc Kovner & Will Himel  
Margaret Krebs  
Keith Krivitzky  
Barry Kropf  
Amy Kuhn  
Brian Kuhn  
Paul Kuntzler  
Nicholas B. Kyrus  
Mark LaFrance  
Tracey Lai  
Betsy Lancaster  
Lawrence Lane  
Phyllis LaPlante  
Jim Lardner  
Sue Lashley  
Billy Laster  
Elaine Lawrence  
John Le Bedda  
Paul Levitt  
Bruce Lederer  
Chris Leone  
Henry Levin, Susan Vitale, & Gigi  
Levin  
Michael Lewallen  
Dillon Lewis  
Betsy Libretta  
Jessica Lichtenfeld  
Scott Linder  
Phyllis Lingenfelder  
Gabriel Lopez  
Timothy Lotz  
Kenneth Lowenberg  
Katie Lucaites  
Craig Lustig  
Luther Place Memorial Church  
Kim Lynch  
Shelby Lynn  
Sean Lyons-Burke  
Jim Madigan  
Steven Magel  
Anthony Main  
Arnold Malhmood  
Alison Malloy

Juan Marroquin  
Joal Martin  
Patricia Martin  
Virginia Martin  
Nicholas Miller & Jonathan  
Maskin  
Sherman Mason  
John & Katrina Masters  
Stefanie Mathew  
Peggy Matthews  
Aaron Maxa  
Alon Mazor  
Monica McAbee  
Donald McArthur  
Meg McCann  
Michelle McGinnies  
Mark & Michelle McKechnie  
Michael McKibben  
Christie McKinney  
Jacqueline McLaughlin  
Jamie McNamara  
Kristina McSwain  
Laura Meadows  
Donald Medor  
Denise Meister  
P. Richard Melintz  
Linda Mellgren  
Anne Mellinger-Birdsong  
Douglas Mendel  
Sal Mergliano  
Caitlin Miller  
Mark Alan Miller  
Thomas Miller & Charles Hall  
V. Colleen Miller  
Christopher & Margaret  
Millson-Martula  
Chan-i Min  
Mary Misulich  
Carl Mitchell  
Bernard Molepske  
Lindsay M. Monte  
Ryan Moore  
Roger Moran  
Kristina Morden  
Gregg Moreland  
Kevin M. Morris  
Linda Morris  
Sheila Morris  
Lorna Morris-Byam  
Susan & Paul Morrison  
Nancy Morrissey  
Evelyn Mortenson  
Tom & Debby Mossburg  
William Mullinix  
Rick Mumford  
John Munt  
Al Munzer & Joel Wind  
Tiffany Murphy  
Colette & Richard Murray  
Paul Negron  
Miko Neri  
Michael Nester  
Darrell Netherton  
Network for Good  
Edward Neuschler  
Paul Newhouse  
Kecia Newton  
Ashley Nicole  
Rebekah Nottingham  
Clint Novotny  
Bruce Nylander  
Kate Ockerman  
James & Claudia Onstad  
Laurie Orr  
Steve Ortman

Edward Oseroff  
Mark Paist  
Sharon Palmer  
Emily Parizer-Velez  
Dr. Barry Parker  
Billy Parker  
Norma Parker  
Jay Pascucci & David Robinson  
Andrea Passafiume  
Marsha Pearson  
Matthew Perra & Anthony  
Bonetti  
Dana Peterman  
Patrick E. Peters & Michael E.  
King  
Eric Peterson  
Gustave Petit  
Edward J. Phillips  
Susan Andrukonis Phillips  
Adriana Picasso  
Jason Pier  
Geraldine Pilzer  
Stan Piotroski  
Pohland Family Foundation  
James Pol  
Robert Popp  
Jen Porter  
Deborah Potter  
Andre Powell  
Robert Powell  
Terry Pretzer  
Erik Price  
C. Rives Priddy  
Thomas H. Pursley  
Chris Quach  
Christian Quilici  
Nancy Quinby  
Martha Ramsey  
Julia Read  
Libby Reder  
William Reed  
Anthony Reedy  
Susan Reider  
Thomas Reiker  
Kathryn Reutemann  
Elaine Ricks  
Barbara Rieger  
Lawrence Riesenbach  
Karl Riley  
Kenneth Riley  
Patrick Riley  
Sam Roberson  
John Robinson  
Nicole Robinson  
William T. Robinson  
Lawrence Rockwell  
Tom Rodehau  
Charles Rohe  
Ronald Ronyecs  
Peter D. Rosenstein  
Rod Ross  
Lesley Rousso  
Kate & Ateesh Roye  
Elise Ruedi  
James Ruggiero  
Morgan Rutherford  
Ron Sabacek & Steve Haught  
Erin Sando  
John Santell  
Michael Sattler  
Kenny Scarle  
Bill Schallenberg  
Kellen Schefter  
Lotte Schlegel  
Catherine & Eric Schmader

Albert Schmidt  
 Jayson Scirratt  
 George Scott  
 Mary Scott & Cindy Todd  
 Suzanne Selander  
 Doug Sellers & Mark Eubanks  
 Gina Senkowski  
 Ed Senn  
 Anne Seymour  
 Stephen Shannon  
 Michael Shea & Edgar McClellan  
 Patrick Shea & Robert Meyer  
 Robert Sheavly & George Huffman  
 Charles M. Sheerin  
 Karissa Silver  
 Keirstyn Silver  
 Mike Silverstein  
 Ruth Simmons  
 Peggy Simpson  
 Wesley Slater  
 Morgan Slusher  
 Jeffrey Smith  
 Kathleen Trollinger Smith  
 Marilyn Smith  
 Tim Smith  
 David Soileau  
 Jan Solomon  
 Mary Claire Soltesz  
 Ruth Sorenson  
 Steve Spar  
 David Sparber  
 Jack Wesley Spirakes  
 Andrew Stafford  
 Dave Stamey  
 Kathryn Stasa  
 Cynthia Stegall  
 Christine Steiner  
 Scott & Pam Stenhouse  
 Anita Stephen  
 Kristen Stinnett

Allen Stock  
 Ann Stohlman  
 Greg Stolarz  
 Melissa & Scott Stricker  
 Mary Strimel & Carolyn Carmody  
 Chinky Sue  
 Pamela Sutherland  
 Barbara & David Swan  
 Amanda Sweet  
 Edward Szrom & John Geiger  
 Amy Talbot  
 Vincent Talbot  
 Gordon Tanner & Robert Patlàn  
 Denise Taylor  
 Tom & Sue Telander  
 Geoffrey Thomas  
 John Thomas  
 Tom & Julie Thompson  
 M. Elizabeth Thorpe  
 Ritchie Tindall  
 Robert Tobiasen  
 Rusty Toooley  
 Theodore Toon  
 Janet Tranter Carrese  
 Evelyn Trindade  
 Donovan Trott  
 Leigh Troutman  
 Christina Tsafoulis  
 Patrick Turner  
 Jeanne B. Tustian  
 Amanda Udis-Kessler  
 Bob van Heuvelen  
 C. Lyn VanNoy  
 Joshua Varner  
 Kathleen Velasco  
 Donna Vervena  
 Jeff Vhelsky  
 Sheila Vibert  
 Joan Vines  
 Claude & Kira Vol  
 Bob Vollinger

Kathryn E. Walsh  
 Rebecca Warner  
 Eric Wawrousek  
 Robin Waxenberg  
 Daniel Weaver  
 Kevin Webster  
 Mike Welsh  
 Thomas M. Welsh  
 Christy White  
 Tyrone White  
 Elena Widder  
 John Wiecking  
 Jonathan Willen  
 Patti Willen  
 David Williams & Charles O'Rourke  
 Drew Williams  
 Manley Williams  
 Myla Williams  
 Matthew Williamson  
 Gretchen Willson  
 Bonnita Wilson  
 Norma Wilson  
 Daryle Wolf  
 Steve Wolf  
 Sheri & Raymond Wolfe  
 Richard Wood  
 The Worden Family  
 Sherilyn Wright  
 Drew Wynn  
 Rick Yarborough  
 Micah Yarborough & Doug McKenney  
 Alice Yates  
 Gary Young  
 Laurie Young  
 Krista Zanetti & David Lutter  
 Bryan Zelle  
 Cindy Zimmerman  
 Justin Zimmerman

## IN KIND DONATIONS

ABW Appliances  
 Emérito Amaro-Carambort  
 Thomas Augustin  
 Michael Aylward  
 Rick Bennett  
 David Lee Black  
 Bonnie's Dog & Cat Grooming  
 Dr. Stephen Crutchfield & Richard Ormseth, RN  
 David Lee Csicsko  
 Paige Cutrona  
 Jocko Fajardo  
 Stephen Flaherty & Lynn Ahrens  
 Bob Gossard & Carl Ziebe  
 Grape Intentions  
 Great American Restaurants  
 Rob Hall & Chris Behan

Carroll Lee Hanson  
 Benjamin Harris  
 C. Paul Heins & Matt DelNero  
 High Museum of Art  
 James Hillis  
 Michael Hughes  
 Ingleside Vineyards  
 Jefferson Vineyards  
 Cathryn & Fred Krebs  
 Paul Kuntzler  
 Lars Etzkorn Law PLLC  
 Maryland Live! Casino  
 Metro 29 Diner  
 Moki Media  
 Dale A. Mott & Kenneth P. Hyle, Jr.  
 Nellie's Sports Bar

Oceano Wines  
 Partnership Wealth Management, LLC  
 Pineapple Point Guest House  
 Jack Reiffer  
 Craig Ruskin  
 Shadowland Laser Adventures  
 Christine Simeone  
 Derek Smith  
 Studio Q Designs  
 Nadia Subaran  
 Total Wine and More  
 VACAYA  
 The Willard Intercontinental  
 Washington, DC  
 Scott Young & Greg Wagner

## FEDERAL CITY STARS

Robert M. Agnello & Gerard Pape  
 Nikolaos Alexiou  
 Mike Allen & David Karnick  
 Brent Almond & Nicholas Pirulli

Anonymous  
 Thomas Augustin  
 Brian Aylward  
 Jay Ball

Pradipta Banerjee  
 Matthew Barth  
 Scott Beller  
 Rick Bennett

# GMCW DONORS

Tom Boeke & Vijay D'Souza  
Thomas Bonsaint  
Leon Boyce  
Phillip Carson  
James & Susan Catlette  
Rachel Cloud  
Skip Concilla  
Iván Dávila & Dean Reichard  
Rick Davis  
Robert Dean  
Robert Dragoset  
Michael Dumlaio & Daniel Arrieta  
David Garofalo  
Jack Gerard & Craig Arnold  
M. David Goldstein  
Robert Gronenberg  
Benjamin Harris  
A. Howland Hartley & William Lee  
Andrew Hastie  
Rob Serpa & Gibson Haynes  
John-Paul Hayworth  
Mark Hegedus & Chris Wilson  
C. Paul Heins & Matt DelNero  
Ken Hewitt  
Kurt Hille & Edward Puzio  
Bill Hillegeist

Donald L. Hinshaw, Jr.  
Raymond Hoffman  
Derrick Jones  
Thea Kano  
William Kibby  
Matthew E. Komornik  
Cathryn & Fred Krebs  
Margaret Krebs  
Col. Chris Lackovic  
Jerry Lee, Joseph Vignali, & Chris Asaro  
Larry & Samilet Lee  
Dillon Lewis  
Scott Linder  
Bill Lipsett & Eric Bolda  
Sean Lyons-Burke  
Jim Madigan  
Don Maish & Jim Harlow  
David McAuley & Dan Johnson  
Andrew McIlroy  
Michael McKibben  
Don Medor  
William Moran  
Kevin Morris  
Paul Negron  
Rob Neighbour  
John O'Brien

Jim Orrell  
Mark Paist  
David & Tammy Paynter  
Robert Popp  
Andrew Powaleny  
Robert Powell  
Chris Quach  
Cori Quirk-Keefe  
William T. Robinson  
Kenneth Roraback  
Jeffrey Rydbom & Rick Knight  
Ivan W. Skowronski-May  
Morgan Slusher  
Derek Smith  
Renee Sontheimer  
Dave Stamey  
Kate & Jeremiah Strack  
Jim Tavenner  
Chris Thomson & Carl Beauregard  
C. Lyn VanNoy  
Bernard Vicary  
Silvio Weisner  
James W. Williams  
Robert Wilson & Elliott Lapin  
Kimball Winn & Stephen O'Neill  
Justin Zimmerman



Join us for the fundraising event of the year!

## Spring Affair 2022

### *Once upon a time...*



May 14, 2022  
Ritz-Carlton, Washington, DC  
1150 22nd Street NW  
Visit [gmcw.org](http://gmcw.org) for tickets and info





## PARTNERS IN HARMONY

In a world where religious leaders and their organizations have too often embodied the oppression and rejection that many of us have suffered, a growing number of synagogues, congregations, and other religious organizations are welcoming and celebrating LGBTQ+ persons. We proudly list them here as our **PARTNERS IN HARMONY**. We recommend them to any who are looking for a faith community to call home. Visit [gmcw.org](http://gmcw.org) for links to all of these religious organizations.

Accotink Unitarian Universalist Church  
 Adat Shalom Reconstructionist Congregation  
 All Souls Church Unitarian  
 All Souls Episcopal Church  
 Arlington Presbyterian Church  
 Augustana Lutheran Church  
 Bet Mishpachah  
 Bethel United Church of Christ  
 Bethesda United Church of Christ  
 Bethlehem Lutheran Church  
 Beverley Hills Community United Methodist Church  
 Bull Run Unitarian Universalist Church  
 Capitol Hill Presbyterian Church  
 Capitol Hill United Methodist Church  
 Cedar Lane Unitarian Universalist Church  
 Center for Spiritual Living — Metro  
 Christ Congregational Church  
 Christ Episcopal Church Kensington  
 Church of the Ascension  
 The Church of the Epiphany  
 Church of the Pilgrims  
 Clarendon Presbyterian Church  
 Commonwealth Baptist Church  
 Congregational Ner Shalom  
 Dignity Washington  
 Dumbarton United Methodist Church  
 Emmanuel Episcopal Church  
 Fairlington Presbyterian Church  
 Fairlington United Methodist Church  
 The Falls Church Episcopal  
 First Baptist Church of the City of Washington, DC  
 First Christian Church of Falls Church  
 First Congregational United Church of Christ  
 Foundry United Methodist Church  
 Friends Meeting of Washington (Quakers)  
 Georgetown Lutheran Church  
 Good Shepherd Lutheran Church  
 Holy Trinity Lutheran Church  
 Hope United Church of Christ  
 Immanuel Presbyterian Church

Kol Ami: Northern Virginia Jewish  
 Reconstructionist Community  
 Little River United Church of Christ  
 Luther Place Memorial Church  
 Lutheran Church of the Reformation  
 Many Voices  
 Metropolitan Community Church of Northern Virginia  
 Metropolitan Community Church of Washington  
 Mount Vernon Place United Methodist Church  
 Mount Vernon Unitarian Church  
 National City Christian Church  
 New York Avenue Presbyterian Church  
 Oaklands Presbyterian Church  
 Rising Sun Outreach Ministry  
 River Road Unitarian Universalist Congregation  
 Rock Spring Congregational United Church of Christ  
 St. Alban's Episcopal Church  
 St. Anne's Episcopal Church  
 St. George's Episcopal Church, Glenn Dale Parish  
 St. John's Episcopal Church, Lafayette Square  
 St. John's Episcopal Church, Norwood Parish  
 St. Luke's Episcopal Church  
 St. Margaret's Episcopal Church  
 St. Mark's Episcopal Church  
 St. Matthew's Episcopal Church  
 St. Michael's Episcopal Church  
 St. Stephen and the Incarnation Episcopal Church  
 St. Thomas' Parish Episcopal Church  
 Takoma Park Presbyterian Church  
 Temple Rodef Shalom  
 Tikken Leil Shabbat  
 Unitarian Universalist Church of Arlington  
 Unitarian Universalist Congregation of Fairfax  
 Unitarian Universalist Congregation of Rockville  
 Unitarian Universalist Congregation of Sterling  
 The United Church — Die Vereinigte Kirche  
 Unity Fellowship Church of Washington, DC  
 Unity of Fairfax  
 Universalist National Memorial Church  
 Washington National Cathedral  
 Westminster Presbyterian Church



IN  
TUNE  
WITH YOU



LARS ETZKORN LAW PLLC

Life & Estate Planning | [www.LarsEtzkornLaw.com](http://www.LarsEtzkornLaw.com) | 202.232.2112

## #Me Too #We Too

**Standing in solidarity with persons who have  
experienced childhood sexual abuse or incest,  
wherever they are in the world**

*"Every person who experiences sexual abuse  
as a child has their own way to imagine they're  
responsible for what happened to them.  
Gay men who are abused commonly imagine  
that just being gay made us to blame for sexual abuse  
by the adults in our lives."*

Raymond S. Hoffman, M.D.  
Board Certified Psychiatrist

Fellow of the International Psychoanalytic Association  
Annapolis and Easton, MD [rshmdfipa@gmail.com](mailto:rshmdfipa@gmail.com)



# EXPERIENCE LUXURY WELLNESS

GMCW members & patrons are invited  
to redeem a complimentary three-day  
trial at VIDA Gallery Place.

**SET UP YOUR TRIAL**



**VIDA Gallery Place** | 601 F Street NW

Offer valid through 3/31/22. Recipients must mention  
GMCW patronage to receive the offer.



## PROUD SUPPORTER OF ALL FAMILIES

In 2011 the Johnson & Johnson Consumer Health CARE WITH PRIDE program was created to openly champion love, equality and care for the LGBTQIA community. Ten years later our mission continues, having raised more than \$1 million for LGBTQIA advocacy organizations and is more important than ever. Join us at [carewithpride.com](https://www.carewithpride.com)

*Johnson & Johnson*

CONSUMER HEALTH



P[OSITIVELY] FEARLESS

janssen | MEMBER OF THE JOHNSON & JOHNSON COMPANY

**BAND-AID**  
BRAND OF ADHESIVE BANDAGES

OGX

Aveeno



Johnson's

**TYLENOL**

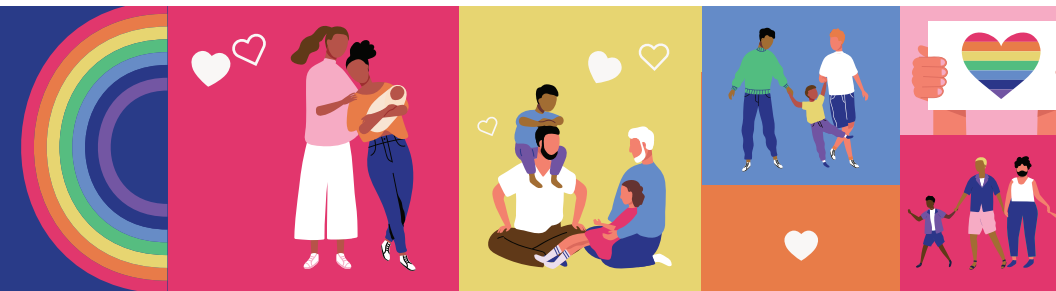
Neutrogena

**LISTERINE**



Rogaine

exuviance



Use all products only as directed. ©Johnson & Johnson Consumer Inc. 2021 CLEAN & CLEAR®, LISTERINE®, NEUTROGENA® are brands marked by Johnson & Johnson Consumer Inc. OGX® is a brand marketed by Vogue International LLC. EXUVIANCE® is a brand marketed by NeoStrata Company, Inc. \*Johnson & Johnson Consumer Health is part of the Johnson & Johnson Family of Companies. Johnson & Johnson is a proud signatory of the Business Coalition for Equality Act and one of only 66 companies to receive perfect scores on both the U.S. Corporate Equality Index and Equidad MX.